



Joe's Bayou Recreation Area and Mattie Kelly Park and Nature Walk Improvement Project

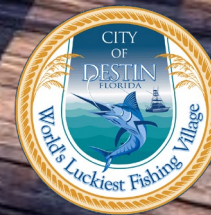
Pearce Barrett, P.E.

Division of Water Restoration Assistance

Deepwater Horizon Program

Florida Department of Environmental Protection

Destin, Florida | Jan. 24, 2023



HALFF





Presentation Outline

FLORIDA DEPARTMENT OF ENVIRONMENTAL PROTECTION

1. Project Goals
2. Funding
3. Project Team
4. Project Status
5. Public Survey Results
6. Planning Assessments
7. Master plan (Draft)
8. Masterplan Overlay on Aerial
9. Parking Improvements
10. Other Improvements
11. Building Floor Plans
12. Renderings
13. Questions & Comments




Project Goals

FLORIDA DEPARTMENT OF ENVIRONMENTAL PROTECTION

- **To develop and improve public access and recreational enhancement to the Joe's Bayou Recreation Area and Mattie Kelly Park and Nature Trail.**
- **These improvements are to include, as the budget allows, the following:**
 - Improve access to the existing boat ramp area and access piers.
 - Replace / Improve the existing fishing pier.
 - Protect and increase access to the shoreline through the construction of a reef breakwater and removal of existing hardscape.
 - Rehabilitation and expansion of parking areas.
 - Repair / Improve the nature trails and viewing areas.
 - Wetland enhancement, pond restoration, and improvements to stormwater management.
 - Lighting, landscaping, irrigation, and park amenities (trash recepticals, benches, interpretive signage).



	REVISIONS		<p><i>CITY OF DESTIN</i> <i>PUBLIC SERVICES DEPT.</i> <i>4200 INDIAN BAYOU TRAIL</i> <i>DESTIN, FLORIDA 32541</i> <i>PHONE: (850) 837-4242</i> <i>FAX: (850) 837-9693</i></p>	<p><i>JOE'S BAYOU</i> <i>RECREATION AREA</i></p>	DRAWING DATE
	DATE	DESCRIPTION			02-02-17
				<p><i>PARK CONCEPT PLAN</i></p>	<p>Sheet No. 4 OF 7</p>



Project Funding

FLORIDA DEPARTMENT OF ENVIRONMENTAL PROTECTION

Funding provided through the Natural Resource Development Assessment Final Restoration Plan RP-1

Total Amount Allocated - \$12,202,891

This amount includes administration, planning, permitting, design, & construction



Project Team

FLORIDA DEPARTMENT OF ENVIRONMENTAL PROTECTION



FDEP –

Project Sponsor, Project Management
Consultant Team



City of Destin Staff –

Owner
Project Input
Plans Review
Permitting



Taylor Engineering –

Prime Consultant
Project Management
Coastal & Waterfront Engineering
Regulatory Permitting Agent



DAG Architects –

Architect
Site Master Planning
Website Development & Maintenance.



Halff Associates, Inc –

Civil Engineering
Landscaping



Project Status

FLORIDA DEPARTMENT OF ENVIRONMENTAL PROTECTION

Project progress to date:

- **Desktop investigations (review of published data).**
 - ✓ Development of a Website to serve as a Platform for Public Outreach.
 - ✓ Develop an online survey and analysis of the results.
- **Data Collection**
 - ✓ Boundary, Topographic, Bathymetric, and Natural Resources.
 - ✓ Initial Geotechnical Investigations.
 - ✓ Assessments of existing conditions and facilities.
- **Planning assessments**
 - ✓ Pedestrian Circulation, Navigation, Mooring, Boat Ramps, Traffic Parking, Existing Structures, etc.
- **Architectural Master Plan. Conceptual designs (30%).**
 - ✓ Pre-application Permit Meeting(s) with Regulatory Agencies (FDEP, USACOE).

Public Survey

1. Results
2. What Did We Learn





Public Survey Results Summary

FLORIDA DEPARTMENT OF ENVIRONMENTAL PROTECTION

In 2022 the Design team was asked to create a survey to help facilitate the community's needs and prioritize the scope of work. The question that needed to be answered

Question...

How can Joe's Bayou / Mattie Kelly Park serve you?

- Who are we serving?
- How is the park already serving You?
- What improvements need to be made?



Public Survey Results Summary

FLORIDA DEPARTMENT OF ENVIRONMENTAL PROTECTION

Who are we serving?

The information and website survey was set up in March 2022 and ran for 45 days. During that time period, we received 437 respondents. [Great Participation!](#) 👍

1. Are you a resident of Okaloosa County?

- 95% of respondents live in the county.

2. Are you also a resident of the City of Destin?

- Roughly 90% of respondents said yes!

3. If you reside in the county, how long have you lived there?

- The majority of the residents have lived in the area for 6+ years (70%)

4. Age Ranges?

- 35 – 50 years (37%)
- 50 – 64 years (27%)
- 25 – 34 years (20%)



Public Survey Results Summary

FLORIDA DEPARTMENT OF ENVIRONMENTAL PROTECTION

How is the park already serving You?

How can we maintain and expand on existing programming

5. What are the most popular activities?

- Boating, walking/jogging/running, fishing
- Kayaking, picnics, bird watching, swimming

6. How many people are you with when visiting?

- 1 – 3 (61%)
- 3 – 6 (27%)

7. How do visitors access the park?

- Vehicles (car, truck, SUV)
- Pedestrian

8. What kind of watercraft are most visitors bring?

- A boat (18 – 28 feet)
- Paddle craft
- No watercraft



Public Survey Results Summary

FLORIDA DEPARTMENT OF ENVIRONMENTAL PROTECTION

What Improvements Need To Be Made?

This will help us prioritize budgetary efforts.

9. What areas of the park need the most Improvement?

- Restrooms #1
- Natural Shoreline Access, boat ramp improvements
- Vehicle with Trailer Parking

10. What improvements would make the park better?

- Shoreline Access, boat ramp, fishing pier, & restrooms
- Shade sitting areas, paddle craft launch, vehicular/trailer parking, nature trail



Public Survey Results Summary

FLORIDA DEPARTMENT OF ENVIRONMENTAL PROTECTION

What did we learn?

Respondent results to the survey.

Our Goals & Highest Priorities.

- Increase shoreline access
- More efficient and better boat trailering parking
- Incorporation of shaded sitting areas
- Improve restroom facilities
- Improve launch access for boats and paddle crafts
- Create & Improve boardwalks, and sidewalks



Planning Assessments

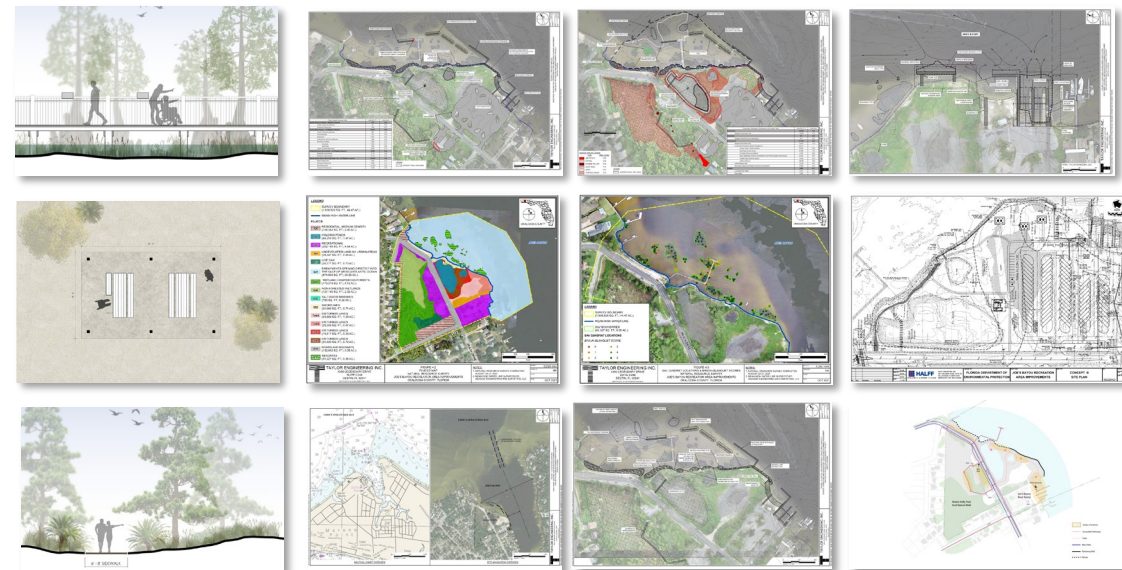
FLORIDA DEPARTMENT OF ENVIRONMENTAL PROTECTION

Assessments -

The design team spent 1 year conducting observations, research, surveys, conceptual engineering, architectural planning, and interviews to develop and document content that was used to support the design direction.

Types of Assessments

- Pedestrian Circulation
- Existing Structure
- Navigation, Mooring, and Boat Ramps
- Traffic & Parking
- Coastal Structures & Conditions
- Stormwater
- Environmental Restoration
- Preliminary Cost Analysis



Masterplan

The background of the slide is a photograph of a park shelter, which is a large, open-sided structure with a flat roof supported by several wooden posts. Inside the shelter, there are several wooden picnic tables. The shelter is situated in a park-like setting with tall grasses in the foreground and various trees, including palm trees, in the background. The entire image is covered with a semi-transparent blue overlay.

1. Existing Views
2. Existing Site Plan
3. Masterplan Overlay
4. Masterplan
5. Alternate
6. Parking Improvements
7. Other Site Improvements
8. Renderings

Existing

Overflow Parking

Pond

Mattie Kelly Nature Trail

Beach Dr.

Fishing Pier



Existing

Mattie Kelly Nature Trail

Pond

Fishing Pier

Overflow Parking

Restrooms

Parking

Boat Ramps

Joe's Bayou



Existing

Boat Ramps

Restrooms

Parking

Mattie Kelly Nature Trail

Overflow Parking

Joe's Bayou

Pond



Existing



Joe's Bayou

Fishing Pier

Overflow Parking

Boat Ramps

Parking

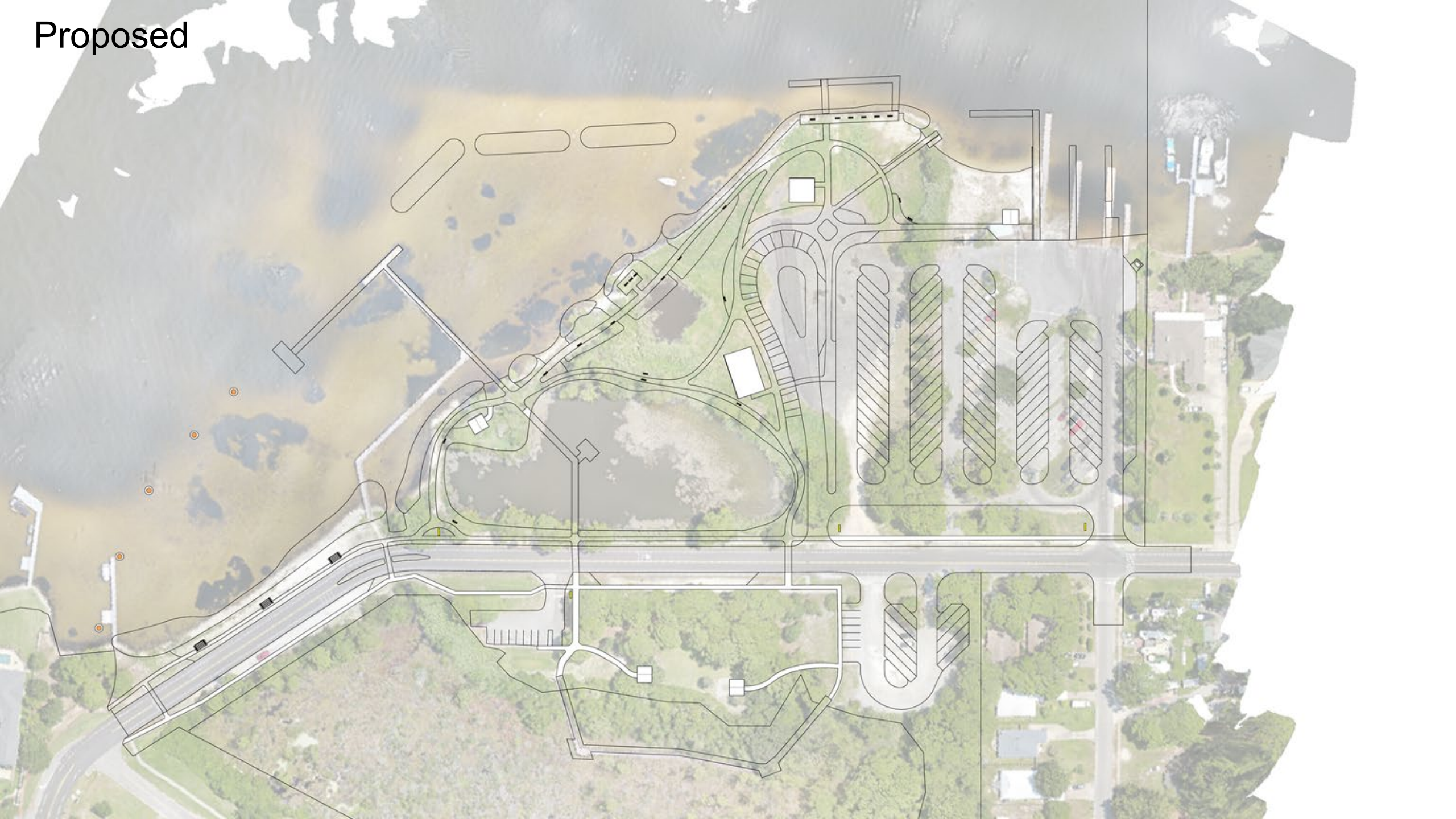
Pond

Beach Dr.

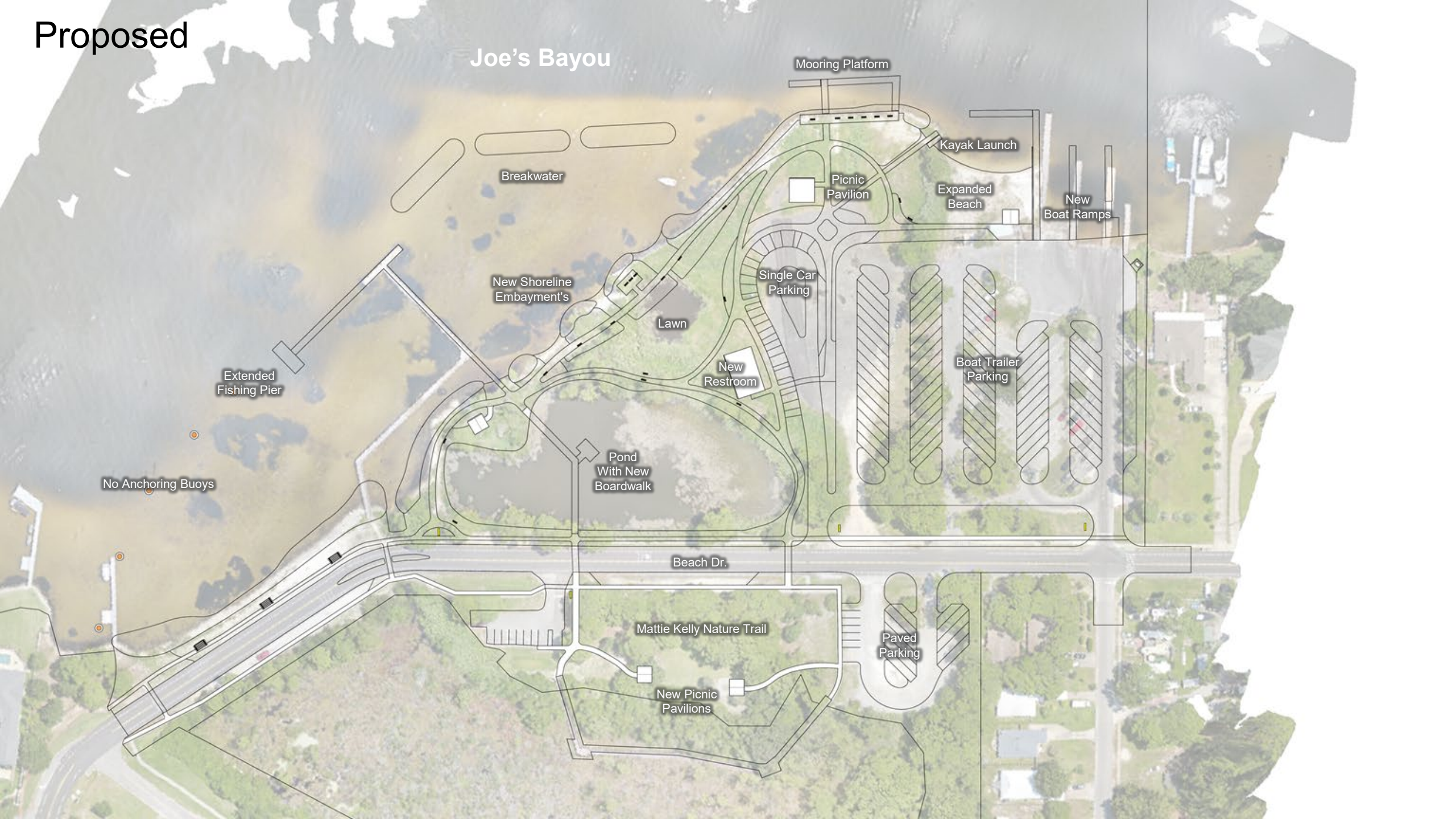
Mattie Kelly Nature Trail

Gravel
Parking

Proposed



Proposed



Joe's Bayou

Mooring Platform

Kayak Launch

Picnic Pavilion

Expanded Beach

New Boat Ramps

Breakwater

New Shoreline Embayment's

Lawn

Single Car Parking

New Restroom

Boat Trailer Parking

Pond With New Boardwalk

Extended Fishing Pier

No Anchoring Buoys

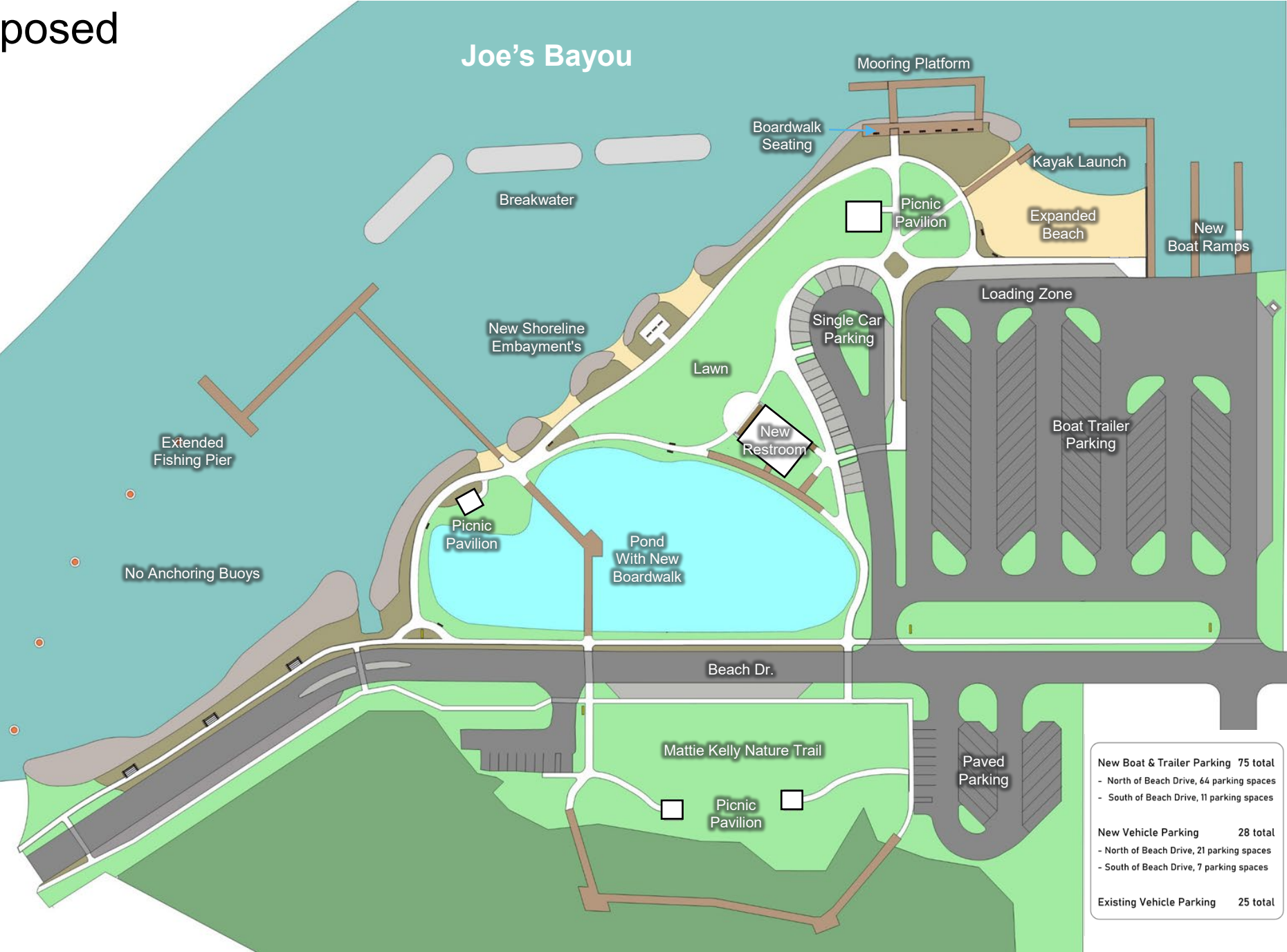
Beach Dr.

Mattie Kelly Nature Trail

New Picnic Pavilions

Paved Parking

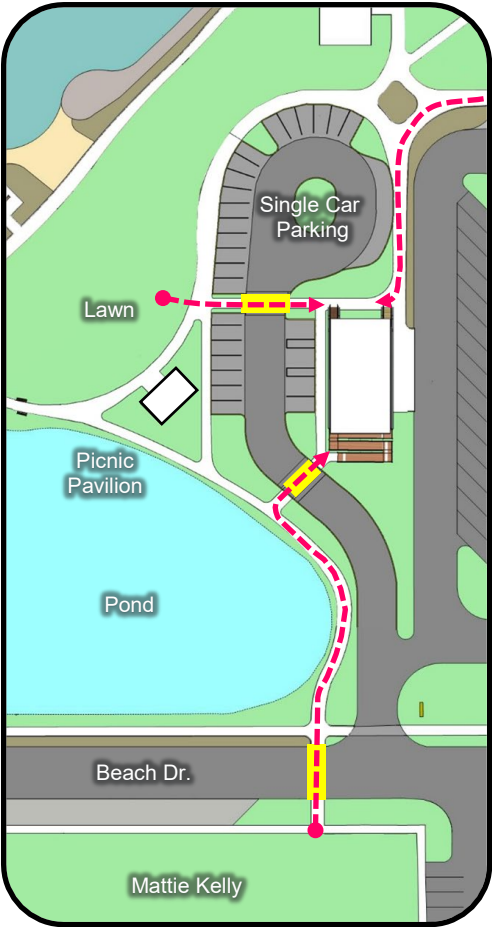
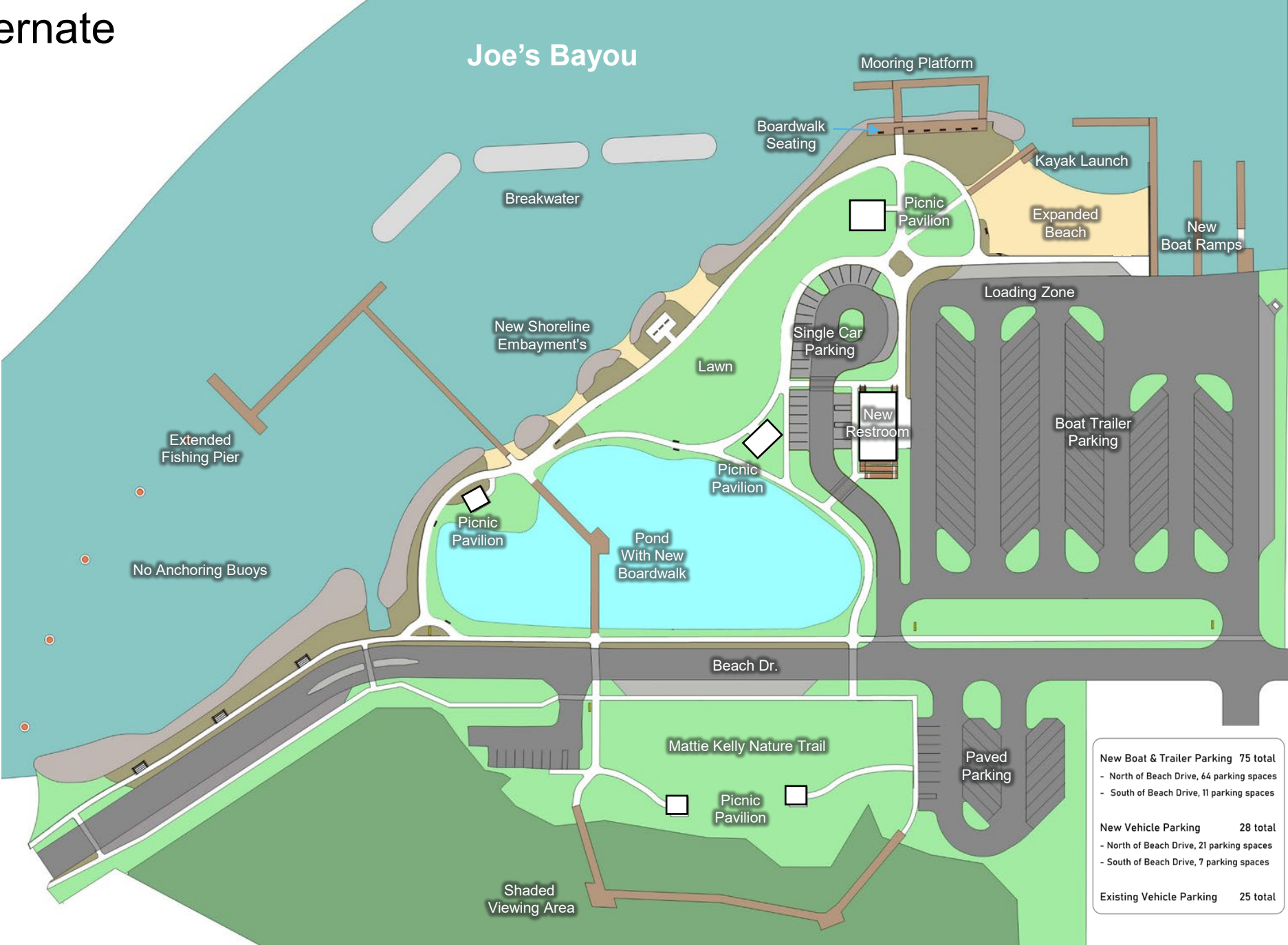
Proposed



Improvements

1. Boat Trailer Parking Lot (64 Spaces)
2. New Boat Trailer Parking (11 Spaces) & Vehicle Parking (7 Spaces)
3. New Mooring Dock
4. Stone Breakwater
5. New Shoreline Embayment's
6. Unloading Zone
7. New Boardwalk Connecting To Fishing Pier
8. Loading Zone
9. Vehicle And Small Paddle-craft Parking (21 Spaces)
10. Small Paddle-craft Loading & Unloading
11. Staff/Security Parking
12. Trash Enclosure
13. New Restrooms 4 Total Stalls With Staff Office
14. Staff Pavilion
15. Large Picnic Pavilion
16. Picnic Pavilions
17. New Signage
18. Pond Restoration
19. Crosswalk Protection
20. Extended Shoreline Access
21. New Fishing Pier Superstructure With Addition
22. Boardwalk Enhancement
23. Shoreline Seating Along Beach Dr.
24. New Boat Launch Piers With 1 ADA Access Launch
25. Small Watercraft ADA Access
26. Shoreline Boardwalk With Seating
27. Lawn Area
28. Revetments
29. Bike Rack
30. Raised Speed Control Crossing Humps With Crossing Signage
31. Viewing Areas
32. Speed Warning Lights
33. No Anchoring Buoys
34. Existing Site Parking (Approx. 25 spaces)

Alternate



Increased Road Crossings
to access the restrooms




Parking Improvements


FLORIDA DEPARTMENT OF ENVIRONMENTAL PROTECTION

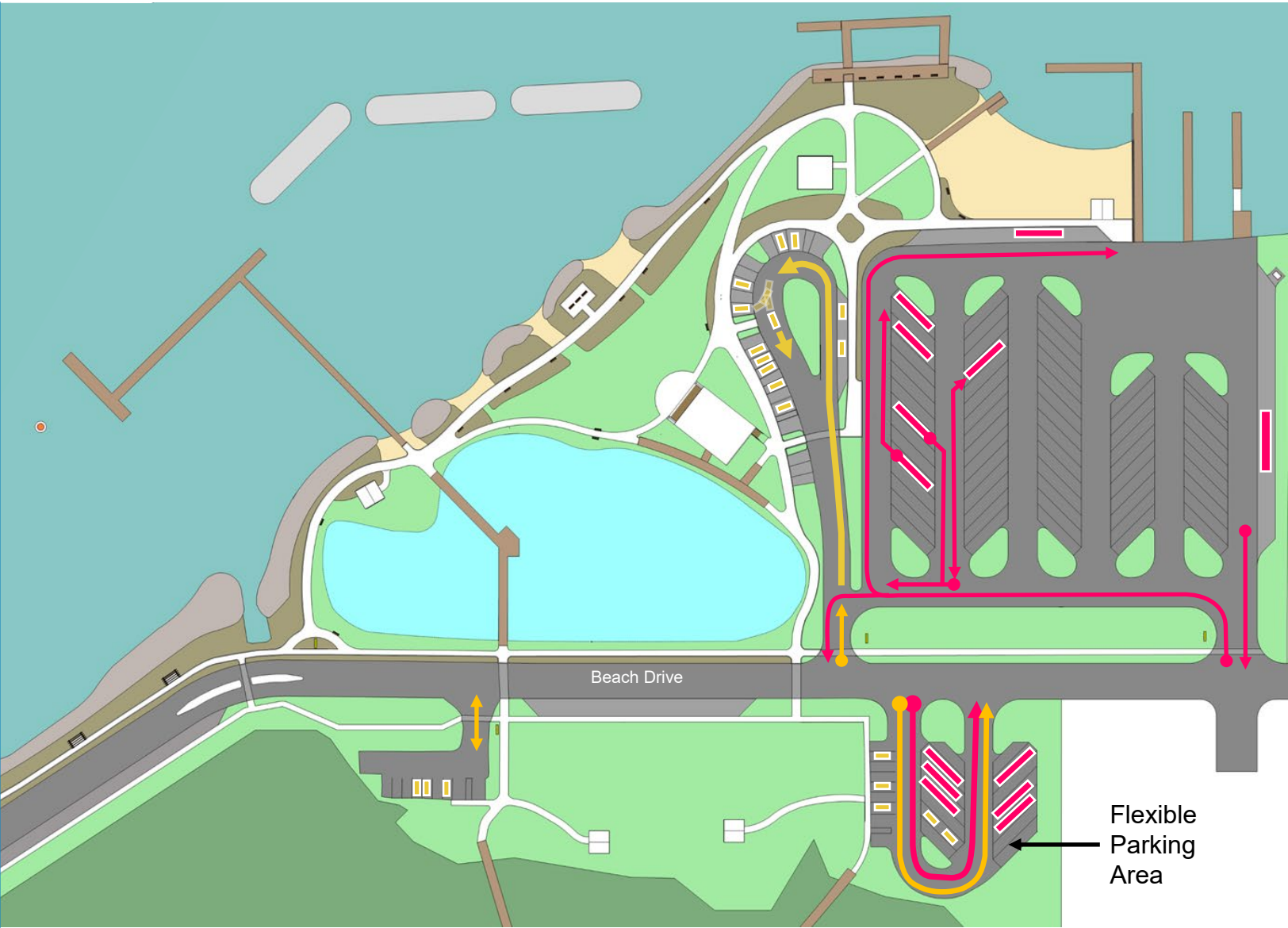
	Parking Spaces			
	Existing		Proposed	
	Single	Trailer	Single	Trailer
Boat Ramp Facility	--	47	21	63
Boat Ramp Overflow (Temporary)	--	~50	--	--
Northwest Lot	11	--	11	--
Southwest Lot	~20	--	12	12
Alongside Parking Areas	~12	--	11	--
Total	~43	~97	55	75

Efficiency improvements

- Parking space dimensions
- Lane size / turning radiuses
- Separation of vehicle/paddle craft launching from vehicle/trailer parking

Single Vehicle 

Boat Trailer 

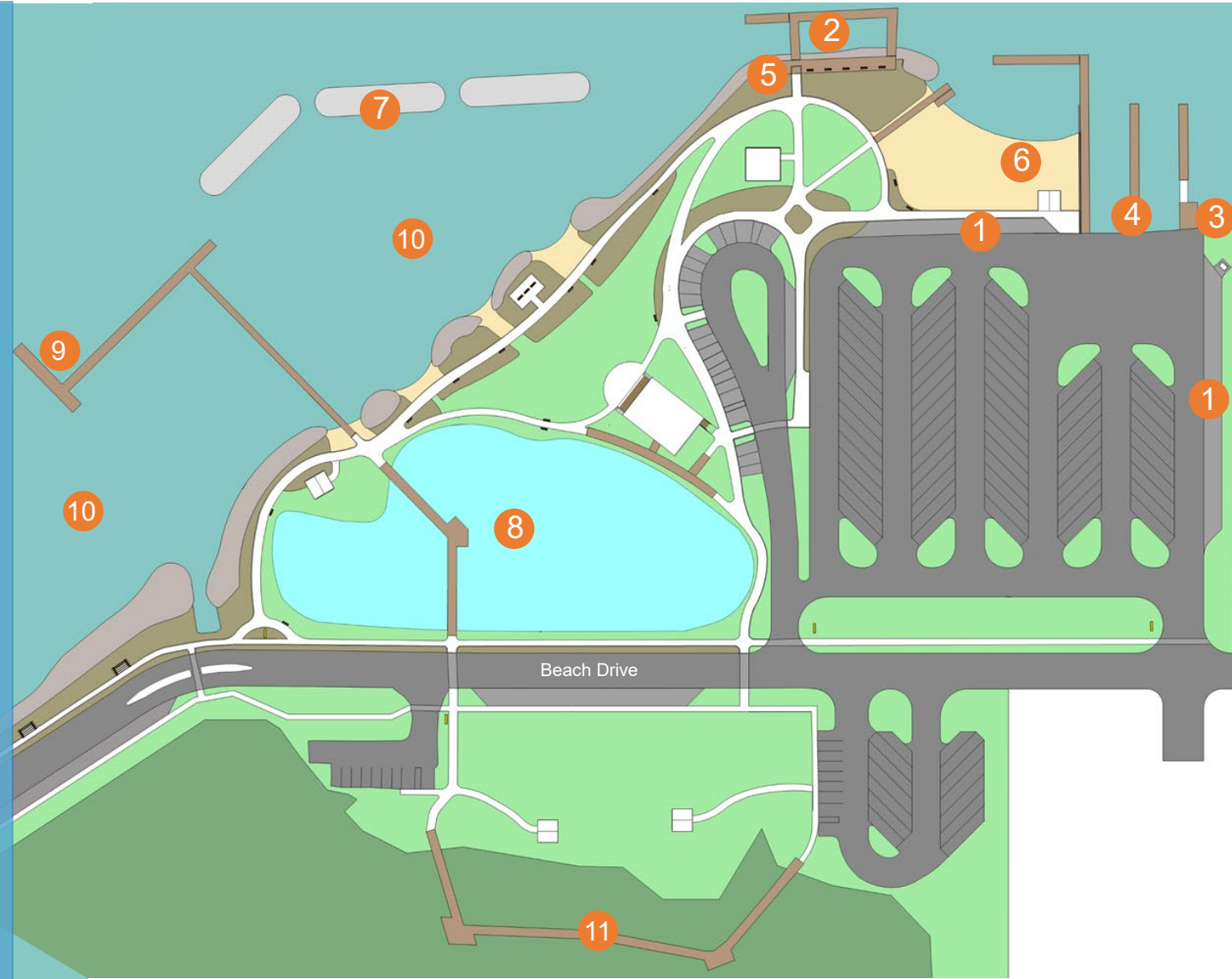




Other Site Improvements

FLORIDA DEPARTMENT OF ENVIRONMENTAL PROTECTION

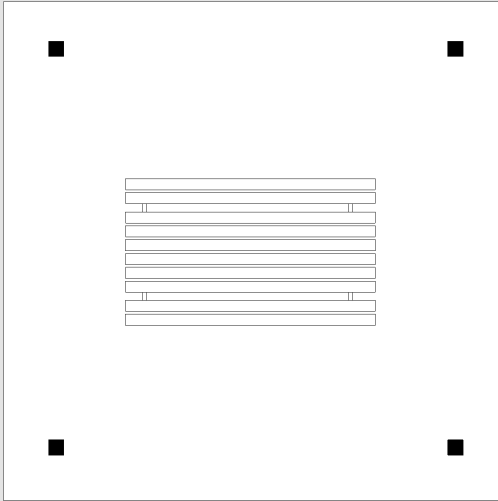
- **Launching efficiency improvements**
 - Improved ramp lane widths, radius, and vehicle trailer parking
 - Consistent ramp slope
 - Circulation (queue lane)
 - Prep/staging areas 1
- **Mooring Piers** 2
 - ADA floating Access Pier 3
 - Fixed timber Piers (3) 4
- **Sanitary pump-out** 5
- **Expansion of beach area** 6
- **Breakwaters** 7
- **Invasive Plant Removal**
- **New Pond Boardwalk** 8
- **Fishing Pier Extension** 9
- **No Anchoring Buoys** 10
- **Repairs to Existing Nature Walk w/added seating areas** 11



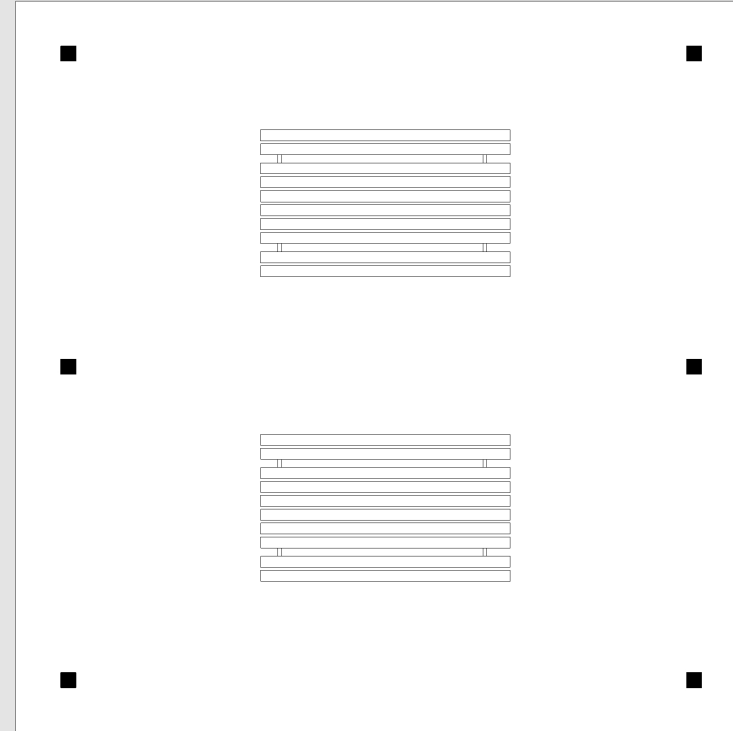


Building Floor Plans

FLORIDA DEPARTMENT OF ENVIRONMENTAL PROTECTION



SMALL PAVLLION

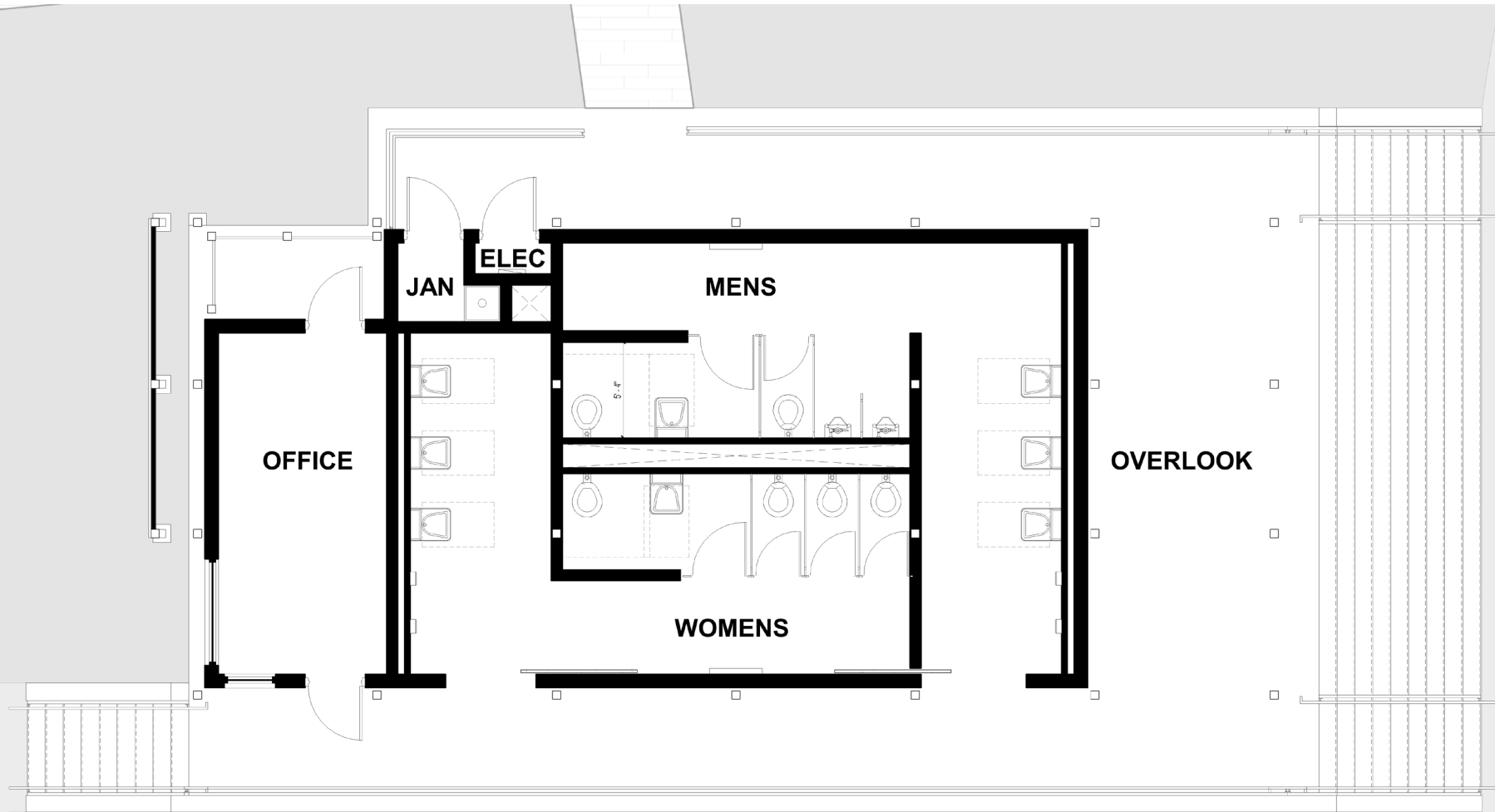


LARGE PAVLLION



Building Floor Plans

FLORIDA DEPARTMENT OF ENVIRONMENTAL PROTECTION

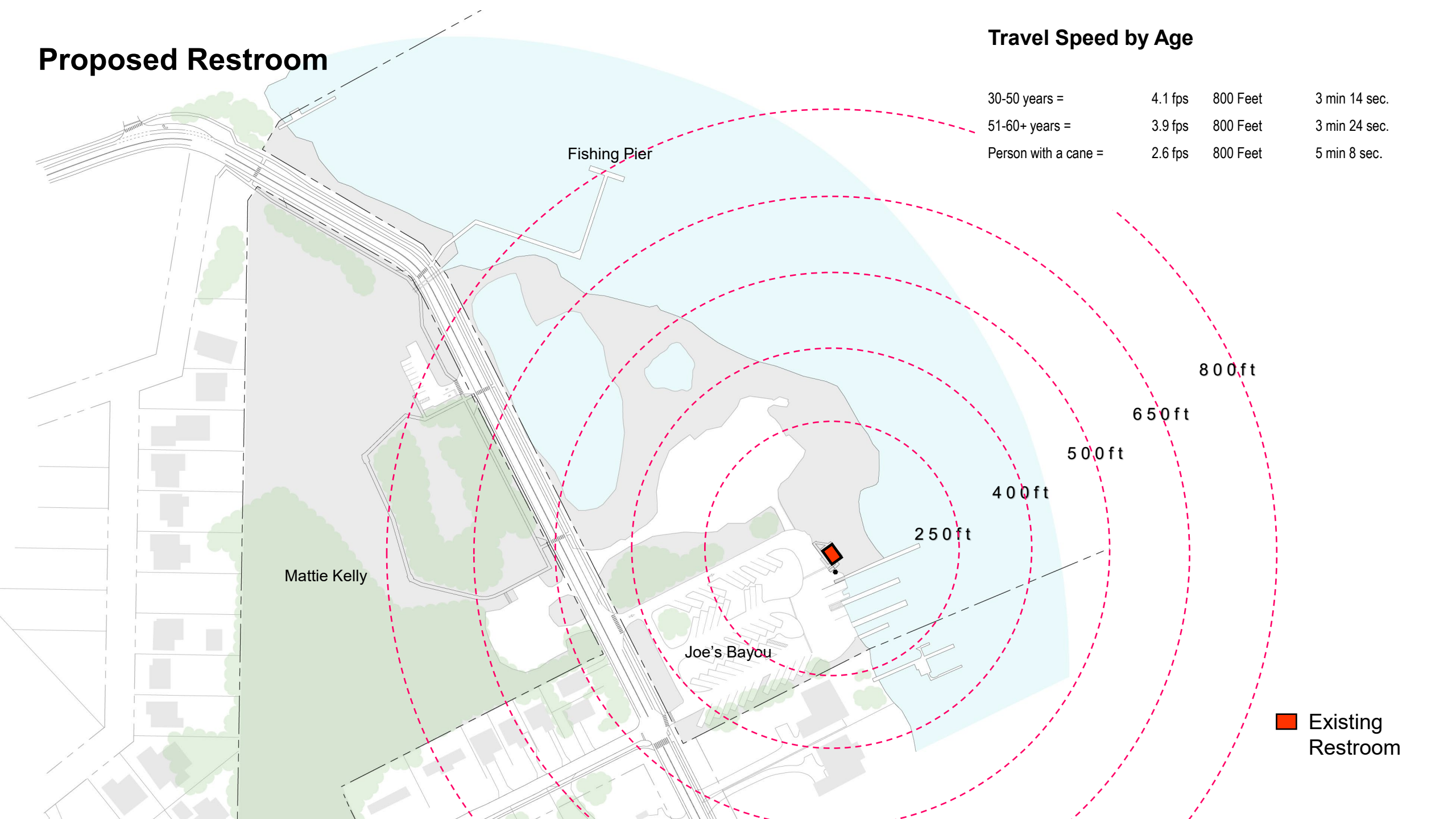


Proposed Restroom

Proposed Restroom

Travel Speed by Age

30-50 years =	4.1 fps	800 Feet	3 min 14 sec.
51-60+ years =	3.9 fps	800 Feet	3 min 24 sec.
Person with a cane =	2.6 fps	800 Feet	5 min 8 sec.

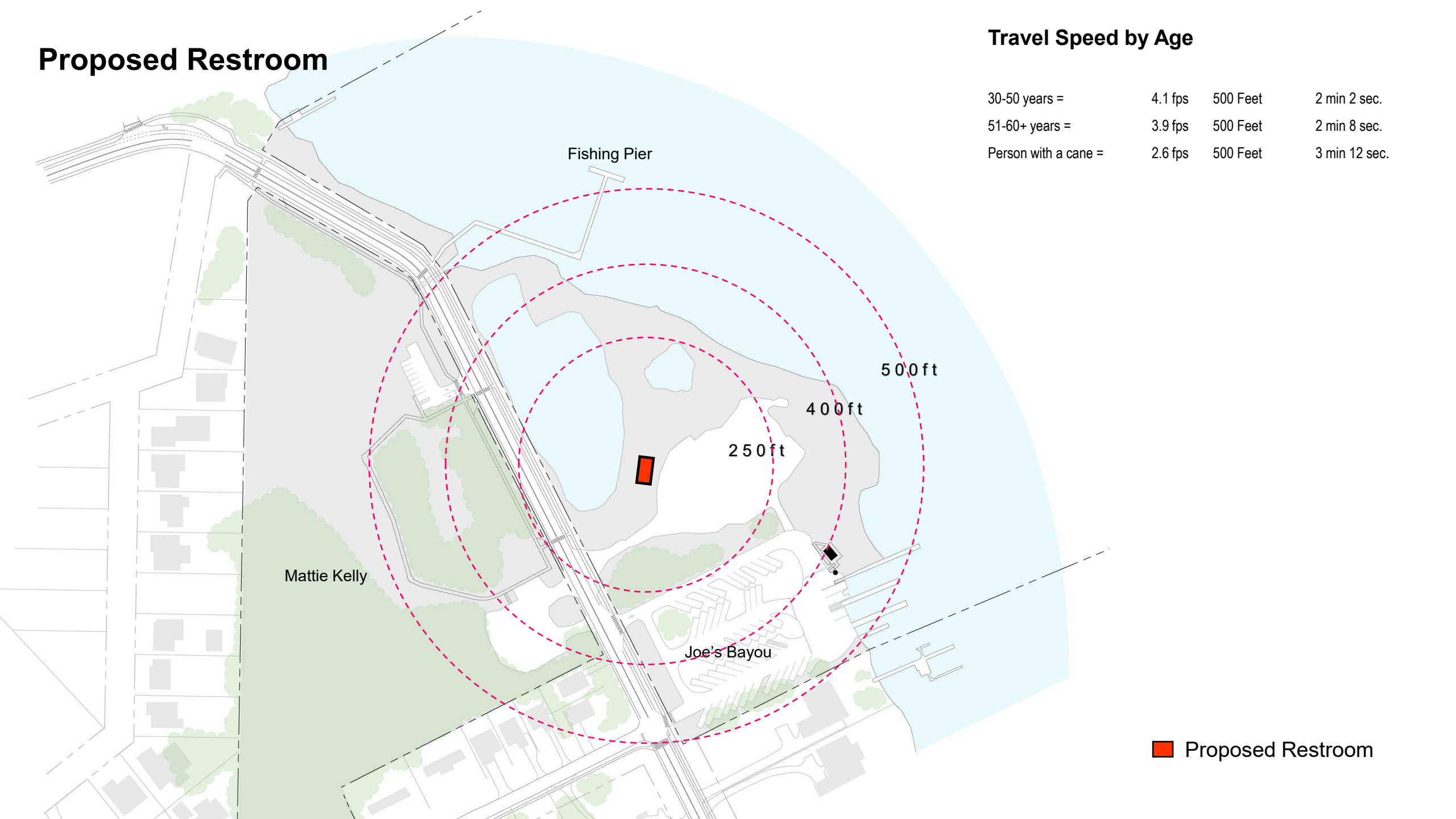


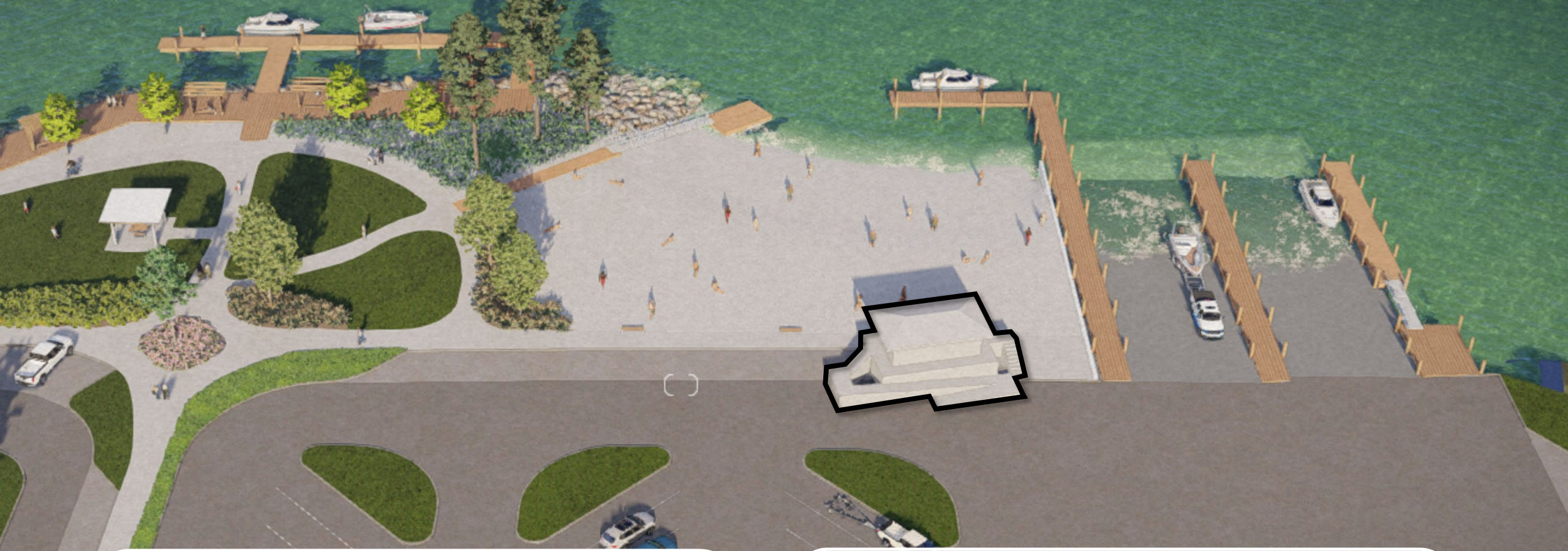
Existing Restroom

Proposed Restroom

Travel Speed by Age

30-50 years =	4.1 fps	500 Feet	2 min 2 sec.
51-60+ years =	3.9 fps	500 Feet	2 min 8 sec.
Person with a cane =	2.6 fps	500 Feet	3 min 12 sec.





VS



An aerial architectural rendering of a park or waterfront development. The scene features a large body of water on the right, with a rocky shoreline and a small boat. A winding path leads through a landscaped area with various trees, shrubs, and a small building with a flat roof. A parking lot with a few cars is visible. The background is filled with a dense forest of tall trees. The entire image is overlaid with a semi-transparent blue filter.

Renderings

Birdseye Overview



View of Pavilion from the water



Birdseye View of Lawn



View of the Lawn



Birdseye View



An aerial, blue-tinted photograph of a park or waterfront area. The scene includes a large body of water on the right, a paved path winding through the center, a small building with a flat roof, a parking lot with a car, and a rocky shoreline. The text "Questions & Comments" is overlaid in white in the center.

Questions & Comments



THANK YOU

Pearce Barrett, P.E.

Division of Water Restoration Assistance
Deepwater Horizon Program

Florida Department of Environmental Protection

Contact Information: 850-245-2106

Pearce.Barrett@floridadep.gov



HALFF

